

Code: DS-2CE12DF3T-F(2.8MM)

AHD, HD-CVI, HD-TVI, PAL CAMERA **DS-2CE12DF3T-F(2.8MM)** ColorVu - 1080p Hikvision

Net: **61.33 EUR** Gross: **61.33 EUR**

Megapixel camera with Progressive scan CMOS sensor and AHD / HD-CVI / HD-TVI / PAL.

The AHD / HD-CVI / HD-TVI interface allows to transmission of analog video signal via coaxial cable in max. 8 Mpx (4K) resolution. During transmission there are no delays and is maintained the original, high quality image. The change of the AHD / HD-CVI / HD-TVI / PAL standard is done with the corresponding button by keeping it pressed for approx. 5 seconds.

In the case of video transmission using a twisted pair cable and matching transformers (balun), be aware of the possibility of signal reflections and interfering signals.

The 3-Axis integrated camera bracket has a regulation in all three planes, which allows to turn the camera to any direction. Camera is according to IP67 Index of Protection norm.

Attention! The camera of the ColorVu series does not have a black and white mode. Thanks to fit the camera in a very sensitive sensor and the LED illuminator emitting visible light in white, the device allows to obtain a clear, colorful image in all lighting conditions.



SPECIFICATION

Standard:	AHD / HD-CVI / HD-TVI / PAL
Sensor:	Progressive Scan CMOS
Matrix size:	2.1 Mpx
Resolution:	1920 x 1080 - 1080p @ AHD / HD-CVI / HD-TVI 960 x 576 - 960H, PAL
Lens:	2.8 mm
View angle:	• 98 ° (manufacturer data) • 93 ° (our tests result)
White light LED illuminator range:	40 m
Video output:	1 Vpp / 75 Ω - AHD / HD-CVI / HD-TVI / PAL, BNC socket
OSD menu:	✓
Main features:	<ul style="list-style-type: none">• Possibility to turn off the LED illuminator• WDR - 130 dB - Wide Dynamic Range• 2D-DNR, 3D-DNR - Digital Noise Reduction• BLC - Back Light Compensation• HLC - High Light Compensation (spot)• Mirror - Mirror image• AGC - Automatic Gain Control• Configurable: brightness, contrast, saturation• Auto White Balance• Motion Detection - max. 4 zones• Privacy zones - max. 4• Sharpness - sharper image outlines
Power supply:	12 V DC / 350 mA

DELTA-OPTI Monika Matysiak; <https://www.delta.poznan.pl>
POL; 60-713 Poznań; Graniczna 10
e-mail: delta-opti@delta.poznan.pl; tel: +(48) 61 864 69 60

Power consumption:	≤ 4.2 W
Housing:	Compact, Metal
Color:	White
"Index of Protection":	IP67
Operation temp:	-40 °C ... 60 °C
Weight:	0.52 kg
Dimensions:	194 x 78 x 75 mm
Supported languages:	English
Manufacturer / Brand:	Hikvision
SAP Code:	300512761
Guarantee:	3 years

PRESENTATION



Side view:



Mounting side view:

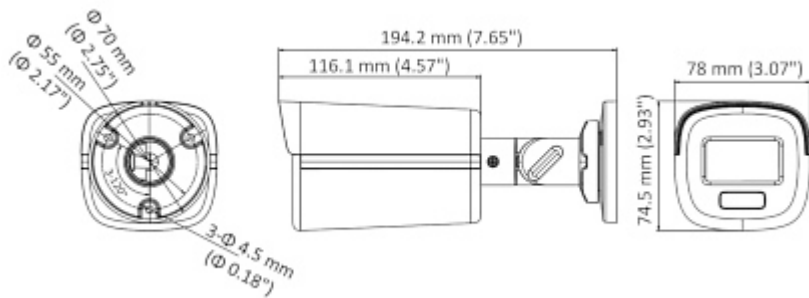




The change of the AHD / HD-CVI / HD-TVI / PAL standard is done with the corresponding button by keeping it pressed for approx. 5 seconds:



Camera dimensions:



In the kit:



OUR TESTS

AHD:

Camera image at artificial illumination (about 30Lux):



Camera image at night conditions with internal built-in LED illuminator on:



Camera image at direct strong light opposite to camera:



HD-CVI:

Camera image at artificial illumination (about 30Lux):



Camera image at night conditions with internal built-in LED illuminator on:



Camera image at direct strong light opposite to camera:



HD-TVI:

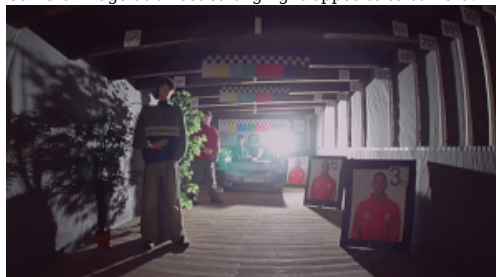
Camera image at artificial illumination (about 30Lux):



Camera image at night conditions with internal built-in LED illuminator on:



Camera image at direct strong light opposite to camera:



PACKAGE

Dimensions (L x W x H): 0x0x0 mm	Gross Weight: 0 kg
----------------------------------	--------------------



DELTA-OPTI Monika Matysiak; <https://www.delta.poznan.pl>
POL; 60-713 Poznań; Graniczna 10
e-mail: delta-opti@delta.poznan.pl; tel: +(48) 61 864 69 60