

Code: RJ45/53*P100

MODULAR PLUG **RJ45/53*P100**

Net: **4.28 EUR** Gross: **4.28 EUR**

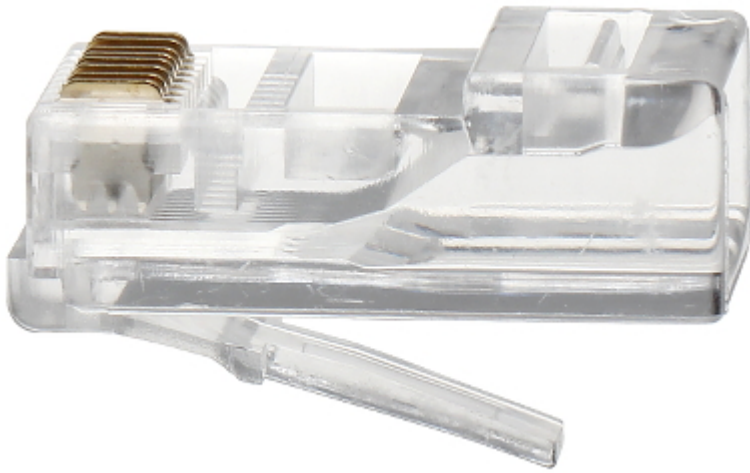


SPECIFICATION

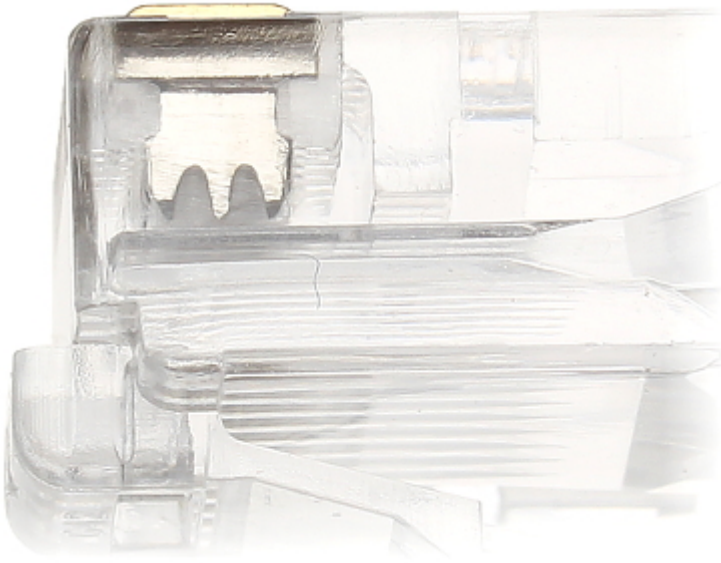
In package:	100 pcs The price for package
Connector type:	RJ 45 - Plug 8 pin
Attachment of connector elements:	Crimping
Wire mounting:	Clamping on each wire with 3-pin edge
Application:	Twisted-pair cable
Material:	<ul style="list-style-type: none">• The pins are made of nickel-plated brass with gold-plated contacts• PET
Example of application:	<ul style="list-style-type: none">• UTP cat. 5e
Main features:	<ul style="list-style-type: none">• Very easy and quick assembly• To crimp use the crimping tool HT-546
Weight:	0.001 kg
Guarantee:	5 years

PRESENTATION

Side view:



Clamping on each wire with 3-pin edge:



Package:



PACKAGE

DELTA-OPTI Monika Matysiak; <https://www.delta.poznan.pl>
POL; 60-713 Poznań; Graniczna 10
e-mail: delta-opti@delta.poznan.pl; tel: +(48) 61 864 69 60

Dimensions (L x W x H): 0x0x0 mm	Gross Weight: 0 kg
----------------------------------	--------------------

