

Code: SD6CE225I-HC-S3

AHD, HD-CVI, HD-TVI, CVBS SPEED DOME CAMERA OUTDOOR SD6CE225I-HC-S3 - 1080p 4.8 ... 120 mm DAHUA

Net: **831.72 EUR** Gross: **831.72 EUR**

Megapixel camera with 1/2.8" Sony STARVIS™ CMOS sensor and AHD / HD-CVI / HD-TVI / CVBS.

The HD-CVI interface allows to transmission of analog, composite video signal via coaxial cable. During transmission there are no delays and is maintained the original, high quality image.

Thanks to the "Starlight" technology used, the camera only needs very low lighting to obtain a clear color image.

Camera is according to IP67 Index of Protection norm.



SPECIFICATION

Standard:	AHD, HD-CVI, HD-TVI, CVBS
Sensor:	1/2.8 " SONY Starvis™ Back-illuminated CMOS
Matrix size:	2.1 Mpx
Resolution:	1920 x 1080 - 1080p 1280 x 720 - 720p 960 x 576 - 960H
Range of IR illumination:	200 m
IR illuminator power adjustment:	Automatic
Lens:	4.8 ... 120 mm
View angle:	• 63 ° ... 2.6 ° (manufacturer data) • 56 ° ... 3.2 ° (our tests result)
Optical zoom:	x 25
Digital zoom:	x 16
Rotation speed depending on ZOOM level:	✓
Auto IR illuminator:	Adaptive adjusting of the IR illuminator power to the lens zoom and outdoor light conditions
Horizontal rotation range:	360 ° continuous
Vertical rotation range:	-20 ° ... 90 °

DELTA-OPTI Monika Matysiak; <https://www.delta.poznan.pl>
POL; 60-713 Poznań; Graniczna 10
e-mail: delta-opti@delta.poznan.pl; tel: +(48) 61 864 69 60

Rotation speed (manual control):	0.1 °/s ... 200 °/s (horizontal) , 0.1 °/s ... 120 °/s (vertical)
Preset rotation speed:	300 °/s (horizontal) , 200 °/s (vertical)
PTZ control:	Via interface RS-485 The ability to control via coaxial cable from recorder Dahua
Protocols:	Pelco-D, Pelco-P, DH-SD (auto detection)
Video output:	AHD / HD-CVI / HD-TVI / CVBS, 1 Vpp / 75 Ω
Audio:	External microphone input
Number of presets:	300
Route settings:	8
Horizontal scan:	✓
Park action:	Call the set function (tour, scan, etc.) after specified dwell time
Alarm inputs / outputs:	2 / 1
Main features:	<ul style="list-style-type: none"> • WDR - 120 dB - Wide Dynamic Range • 2D-DNR, 3D-DNR - Digital Noise Reduction • F-DNR (Defog) - Reduction of image noise caused by precipitation • IR illuminator optimization • BLC/HLC - Back Light / High Light Compensation • ICR - Movable InfraRed filter • Auto White Balance • 24 Configurable Privacy Zones • The camera is equipped with a built-in heater with a thermostat
OSD menu:	✓
Vandal-proof:	IK10
"Index of Protection":	IP67
Power supply:	24 V AC / 3 A (power adapter included)
Power consumption:	≤ 25 W
Housing:	Speed Dome, Metal
Color:	White
Operation temp:	-40 °C ... 60 °C
Weight:	6.5 kg
Dimensions:	270 x 420 x 209 mm
Supported languages:	Polish, English
Manufacturer / Brand:	DAHUA
Guarantee:	3 years

PRESENTATION

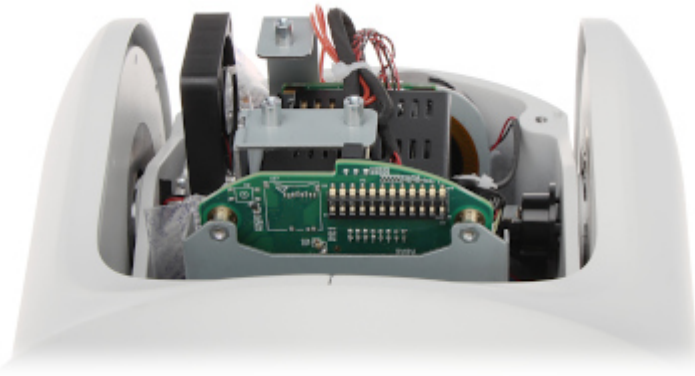
Bottom view:



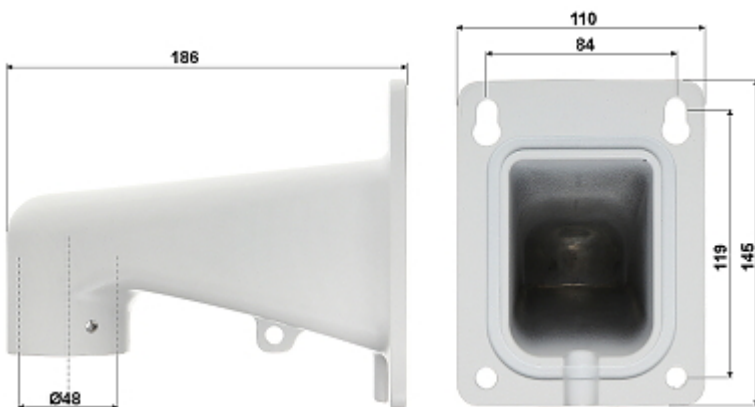
DELTA-OPTI Monika Matysiak; <https://www.delta.poznan.pl>
POL; 60-713 Poznań; Graniczna 10
e-mail: delta-opti@delta.poznan.pl; tel: +(48) 61 864 69 60



On the body, under the cover there are placed configuration switches:

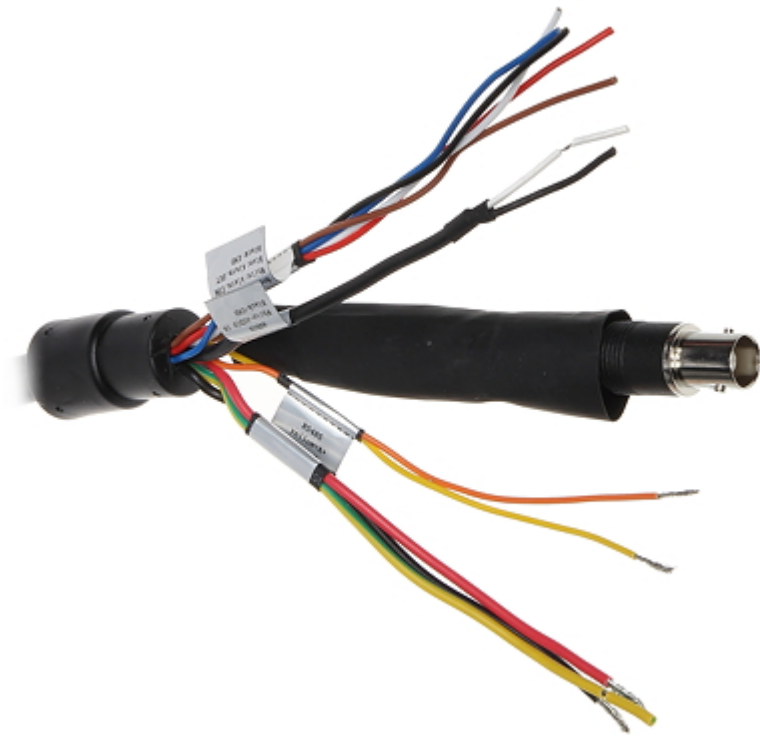


Bracket dimensions:



Camera connectors:





Connectors description:



In the kit:



OUR TESTS

AHD:

Camera image at artificial illumination (about 30Lux):



Camera image at night conditions with internal built-in IR illuminator on:



Camera image at direct strong light opposite to camera:



HD-CVI:

Camera image at artificial illumination (about 30Lux):



Camera image at night conditions with internal built-in IR illuminator on:



Camera image at direct strong light opposite to camera:



HD-TVI:

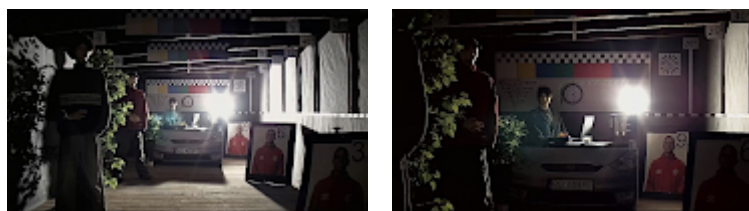
Camera image at artificial illumination (about 30Lux):



Camera image at night conditions with internal built-in IR illuminator on:



Camera image at direct strong light opposite to camera:



PACKAGE

Dimensions (L x W x H): 0x0x0 mm	Gross Weight: 0 kg
----------------------------------	--------------------