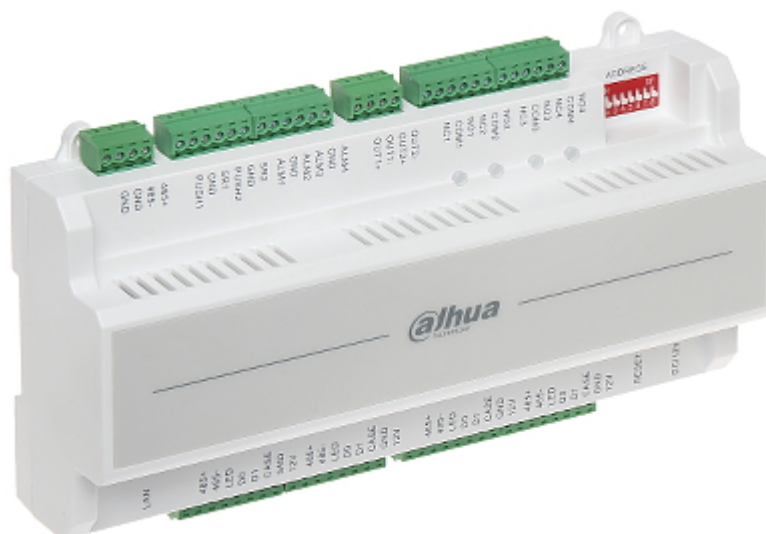


Code: DHI-ASC1202B

# ACCESS CONTROLLER **DHI-ASC1202B** DAHUA

Net: **174.65 EUR** Gross: **174.65 EUR**



The DHI-ASC1202B controller is intended to use in access control systems based on electrical control of door opening.

## SPECIFICATION

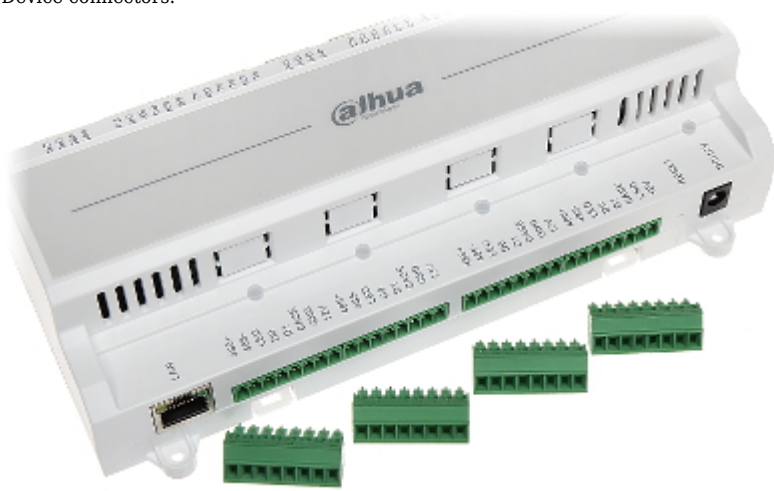
Support:	DAHUA
Number of supported readers:	2 pcs
Battery backup support:	—
Input lines:	6
Output lines:	4 Relay
Communication:	<ul style="list-style-type: none"><li>• RS-485,</li><li>• Ethernet,</li><li>• Wiegand</li></ul>
Power supply:	9 ... 15 V / 500 mA DC
Default IP address:	192.168.0.2
Default admin user / password:	admin / admin
Main features:	<ul style="list-style-type: none"><li>• ACS Client software included</li><li>• 100000 indexed users</li><li>• History of 150000 events</li><li>• Remote programming from PC</li></ul>
Operation temp:	-30 °C ... 60 °C
Permissible relative humidity:	max. 95 % (non-condensing)
Weight:	0.385 kg
Dimensions:	210 x 118 x 52 mm
Manufacturer / Brand:	DAHUA
Guarantee:	<b>3 years</b>

## PRESENTATION

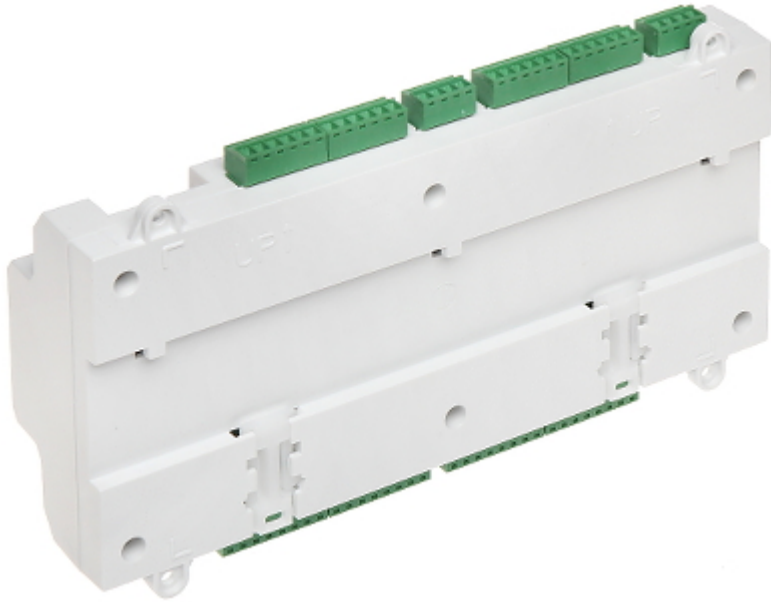
DELTA-OPTI Monika Matysiak; <https://www.delta.poznan.pl>  
POL; 60-713 Poznań; Graniczna 10  
e-mail: [delta-opti@delta.poznan.pl](mailto:delta-opti@delta.poznan.pl); tel: +(48) 61 864 69 60



Device connectors:



Mounting side view:



**PACKAGE**

Dimensions (L x W x H): 0x0x0 mm	Gross Weight: 0 kg
----------------------------------	--------------------

