

Code: APTI-AI60FRTD

ACCESS CONTROLLER WITH TEMPERATURE MEASUREMENT **APTI-AI60FRTD** 4.5 mm - 1080p

Net: **71.60 EUR** Gross: **71.60 EUR**



Access controller based on face recognition with non-contact body (wrist) temperature measurement.

A solution dedicated to temperature measurement. The sensor placed on the side is able to detect an increased temperature of the object. It can be used for preliminary temperature control in places such as customs, airports, schools and hospitals. Face recognition with extended functionality allows you to determine whether the observed person has a protective mask and in the absence of a mask perform the appropriate action, e.g. trigger a voice message reminding to cover the face.

Attention! The face recognition feature requires that photos for the database be taken in homogeneous lighting, and the size of a single photo must not exceed 2 MB. In addition, the photo should be cropped in such a way that the image contains the entire face, while the face should occupy as much of the surface of the image as possible. When using the face recognition function for people in protective masks, the optimal working conditions of the device are ensured by positioning it so that the lens is at the height of the face and is directed towards it.

SPECIFICATION

Sensor:	1/2.8 " SONY Starvis™ Back-illuminated CMOS
Matrix size:	2.1 Mpx
Scanning system:	Progressive
Lens:	4.5 mm
View angle:	68 °
Optical zoom:	—
Resolution:	1920 x 1080 - 1080p

Auxiliary camera:

Sensor:	1/5 " GC2145
Matrix size:	2 Mpx
Pixel pitch:	1.75 µm
Lens:	2.4 mm
View angle:	70 °
Resolution:	800 x 600 - 0.48 Mpx

General information:

Standard:	TCP/IP
Range of IR illumination:	5 m

DELTA-OPTI Monika Matysiak; <https://www.delta.poznan.pl>
POL; 60-713 Poznań; Graniczna 10
e-mail: delta-opti@delta.poznan.pl; tel: +(48) 61 864 69 60

White light LED illuminator range:	5 m
Temperature measurement:	✓
Temperature measurement range:	35 °C ... 42 °C
Accuracy of temperature measurement:	± 0.3 °C
Face recognition distance:	0.5 m ... 2.3 m (max 30 000 faces in the database)
Temperature measurement distance:	1 cm ... 3 cm
Internal memory:	Support storage of 25 000 records
Video output:	—
RS-485 interface:	✓
Wiegand interface:	✓
Memory card slot:	—
Alarm inputs / outputs:	0 / 1 - Relay outputs
Audio:	Speaker built-in
Network interface:	10/100 Base-T (RJ-45)
Network protocols:	IPv4, HTTP, HTTPS, TCP/IP
WEB Server:	Built-in
Max. number of on-line users:	20
ONVIF:	—
Default IP address:	DHCP / 192.168.1.88
Default admin user / password:	admin / 12345
Web browser access ports:	7080
PC client access ports:	7080
Main features:	<ul style="list-style-type: none"> • Built-in LCD display showing the image from the video camera and the result of temperature measurement - 1024 x 600 px • Wiegand 26 • Day/Night mode (color/b&w/auto) • RESET button • Relay output operating modes: access control or notification of an exception
Power supply:	12 V DC
Power consumption:	≤ 12 W
Housing:	Compact - Metal
Color:	Silver
"Index of Protection":	IP66
Operation temp:	15 °C ... 25 °C - temperature measurement only in closed rooms (stabilized temperature)
Weight:	1.02 kg
Dimensions:	305 x 112 x 59 mm
Montage hole diameter:	33 mm
Length of the cable:	64 cm
Supported languages:	Polish, English, French, Spanish, Russian, Turkish, Italian
Manufacturer / Brand:	APTI
Guarantee:	3 years

PRESENTATION



DELTA-OPTI Monika Matysiak; <https://www.delta.poznan.pl>
POL; 60-713 Poznań; Graniczna 10
e-mail: delta-opti@delta.poznan.pl; tel: +(48) 61 864 69 60

Front view:



Side view:



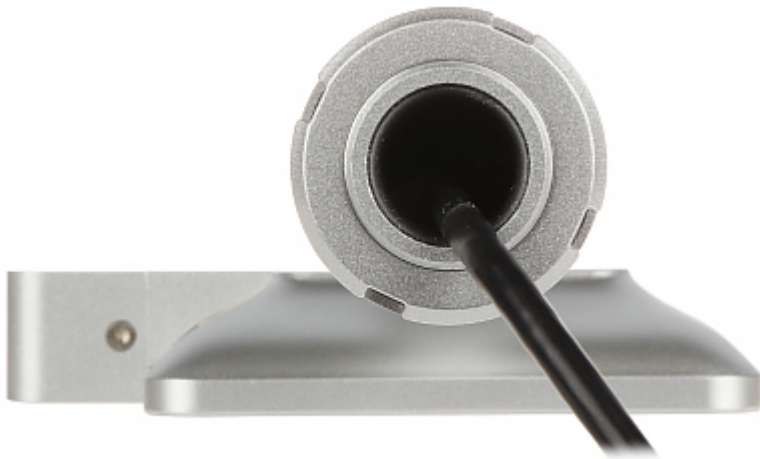
Temperature Sensor:



Rear view:



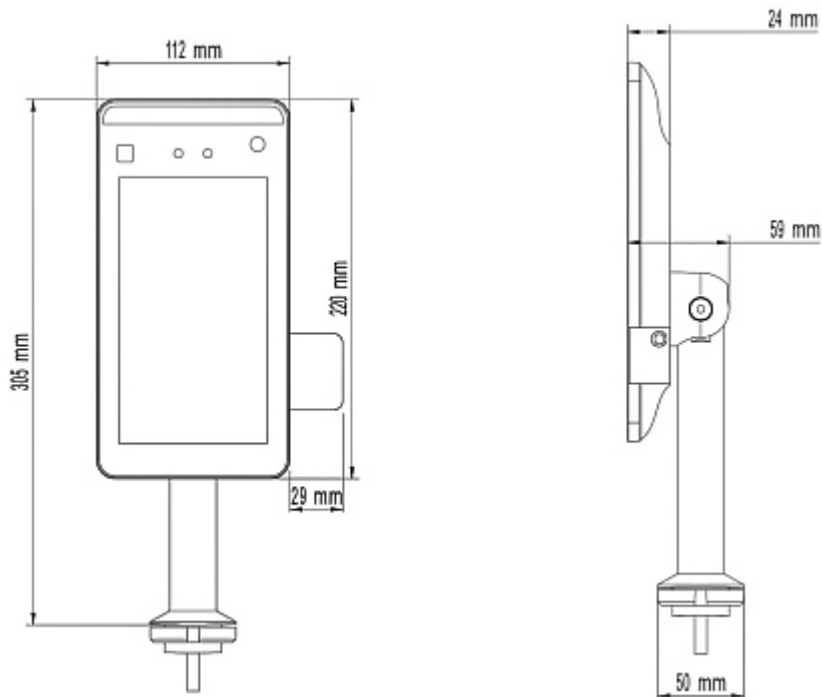
Mounting side view:



Connectors:



Dimensions:



Configuration and operation of the controller:

: Controller with the BD-A003 bracket, available separately:



In the kit:



PACKAGE

Dimensions (L x W x H): 0x0x0 mm	Gross Weight: 0 kg
----------------------------------	--------------------

