

Code: APTI-H24C4-2812W

AHD, HD-CVI, HD-TVI, PAL CAMERA **APTI-H24C4-2812W** - 1080p 2.8 ... 12 mm

Net: **40.71 CHF** Gross: **40.71 CHF**

Megapixel camera with 1/2.9" Sony CMOS sensor and AHD / HD-CVI / HD-TVI / PAL.

The AHD / HD-CVI / HD-TVI interface allows to transmission of analog video signal via coaxial cable in 1080p resolution. It enables the transmission of HD resolution images for even 500 m distance with keeping the low costs of the installation. During transmission there are no delays and is maintained the original, high quality image.

Setting the camera in PAL mode allows to obtain an image in 960H resolution. The appropriate signal format selection is done by tilting the joystick in the desired direction while switching voltage.



SPECIFICATION

Standard:	AHD, HD-CVI, HD-TVI, PAL
Sensor:	1/2.9 " Sony CMOS IMX322
Digital Image Processor:	HTC1080
Matrix size:	2.4 Mpx
Resolution:	1920 x 1080 - 1080p, AHD-H, HD-CVI, HD-TVI , 960 x 576 - 960H, PAL
Range of IR illumination:	40 m
IR illuminator power adjustment:	Automatic
Lens:	2.8 ... 12 mm, 2 Mpx
View angle:	• 86 ° ... 23 ° (manufacturer data) • 93 ° ... 35 ° (our tests result)
S/N ratio:	> 50 dB
Video output:	1 Vpp 75 Ω, AHD / HD-CVI / HD-TVI / PAL - selectable by switch
Main features:	• ICR - Movable InfraRed filter • Sense-UP - (Slow Shutter) - Increase the sensor sensitivity • D-WDR - Wide Dynamic Range • 3D-DNR - Digital Noise Reduction • AGC - Automatic Gain Control • Sharpness - sharper image outlines • Auto White Balance
OSD menu:	✓
"Index of Protection":	IP66

DELTA-OPTI Monika Matysiak; <https://www.delta.poznan.pl>
POL; 60-713 Poznań; Graniczna 10
e-mail: delta-opti@delta.poznan.pl; tel: +(48) 61 864 69 60

Power supply:	12 V DC / 440 mA
Power consumption:	5.3 W
Housing:	Compact - Metal
Color:	White
Operation temp:	-20 °C ... 50 °C
Weight:	0.7 kg
Dimensions:	212 x 87 x 84 mm
Supported languages:	Polish, English, French, Spanish, Dutch, German, Portuguese, Russian, Turkish, Italian
Guarantee:	2 years

PRESENTATION

Front view:



Side view:



Bottom view:



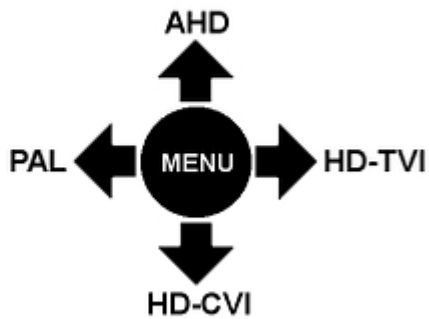


Mounting side view:



The appropriate signal format selection is done by tilting and holding the joystick for 5 s without entering to the OSD menu. Changing the signal to the NTSC in the camera causes loss of image in connected AHD recorder:





Configuration

1) Move the joystick in the correct direction

2) Turn on the power

In the kit:



OUR TESTS

AHD:

Camera image at artificial illumination (about 30Lux):



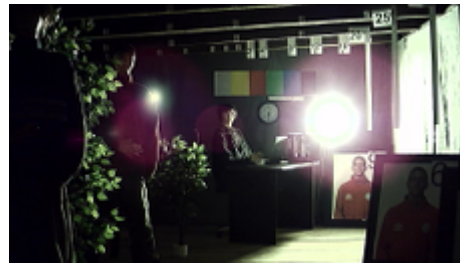
Camera image at night conditions with internal built-in IR illuminator on:



DELTA-OPTI Monika Matysiak; <https://www.delta.poznan.pl>
POL; 60-713 Poznań; Graniczna 10
e-mail: delta-opti@delta.poznan.pl; tel: +(48) 61 864 69 60

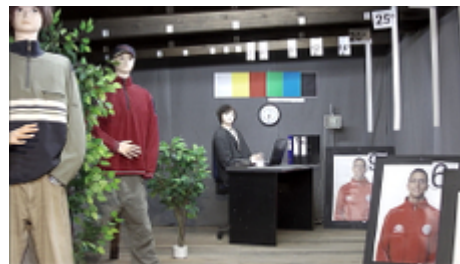


Camera image at direct strong light opposite to camera:



HD-CVI:

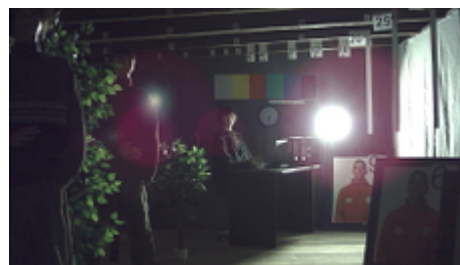
Camera image at artificial illumination (about 30Lux):



Camera image at night conditions with internal built-in IR illuminator on:



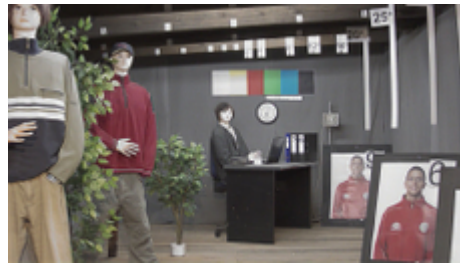
Camera image at direct strong light opposite to camera:



HD-TVI:

Camera image at artificial illumination (about 30Lux):

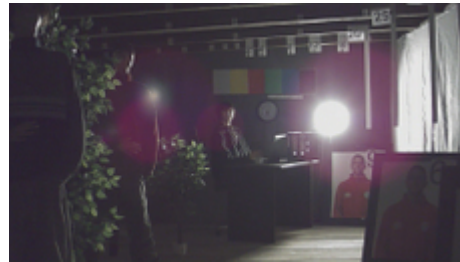




Camera image at night conditions with internal built-in IR illuminator on:



Camera image at direct strong light opposite to camera:



PACKAGE

Dimensions (L x W x H): 0x0x0 mm	Gross Weight: 0 kg
----------------------------------	--------------------

