

Code: GRAFIX-15C6-21

# AHD, HD-CVI, HD-TVI, PAL CAMERA **GRAFIX-15C6-21** - 720p 2.8 ... 12 mm

Net: **284.79 DKK** Gross: **284.79 DKK**

Megapixel camera with 1/3" CMOS sensor and AHD / HD-CVI / HD-TVI / PAL.

The AHD / HD-CVI / HD-TVI interface allows to transmission of analog video signal via coaxial cable in 720p resolution. It enables the transmission of HD resolution images for even 500 m distance with keeping the low costs of the installation. During transmission there are no delays and is maintained the original, high quality image.

Setting the camera in PAL mode allows to obtain an image in 960H resolution.

The appropriate signal format selection is done by tilting the joystick in the desired direction while switching voltage.



## SPECIFICATION

Standard:	AHD, HD-CVI, HD-TVI, PAL
Sensor:	1/3 " HD8980 CMOS
Digital Image Processor:	DI3010
Matrix size:	1.3 Mpx
Resolution:	<ul style="list-style-type: none"><li>• 1280 x 720 - 720p, AHD-M, HD-CVI, HD-TVI</li><li>• 960 x 576 - PAL</li></ul>
Range of IR illumination:	60 m
IR illuminator power adjustment:	Automatic
Lens:	2.8 ... 12 mm, 3 Mpx
View angle:	<ul style="list-style-type: none"><li>• 81 ° ... 23 ° (manufacturer data)</li><li>• 83 ° ... 33 ° (our tests result)</li></ul>
S/N ratio:	> 50 dB
Video output:	1 Vpp 75 Ω, AHD, HD-CVI, HD-TVI, PAL
Main features:	<ul style="list-style-type: none"><li>• ICR - Movable InfraRed filter</li><li>• 3D-DNR - Digital Noise Reduction</li><li>• BLC - configurable Back Light Compensation</li><li>• HLC - High Light Compensation (spot)</li><li>• Privacy zones</li><li>• Sharpness - sharper image outlines</li><li>• Day/Night mode - configurable</li></ul>
OSD menu:	✓
"Index of Protection":	IP66
Power supply:	12 V DC / 550 mA
Housing:	Compact, Metal
Color:	Graphite
Operation temp:	-20 °C ... 50 °C

DELTA-OPTI Monika Matysiak; <https://www.delta.poznan.pl>  
POL; 60-713 Poznań; Graniczna 10  
e-mail: [delta-opti@delta.poznan.pl](mailto:delta-opti@delta.poznan.pl); tel: +(48) 61 864 69 60

Weight:	0.94 kg
Dimensions:	305 x 107 x 110 mm
Guarantee:	2 years

## PRESENTATION

Front view:



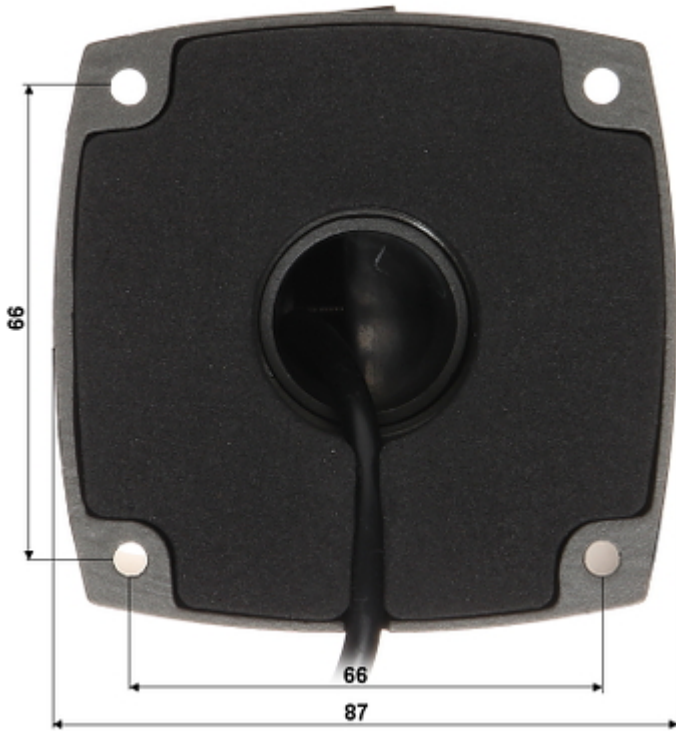
Side view:



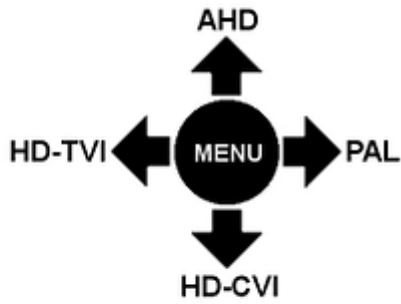
Bottom view:



Mounting side view:

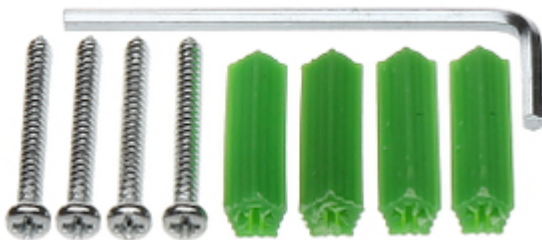


The appropriate signal format selection is done by tilting the joystick in the desired direction while switching voltage:



**Configuration**

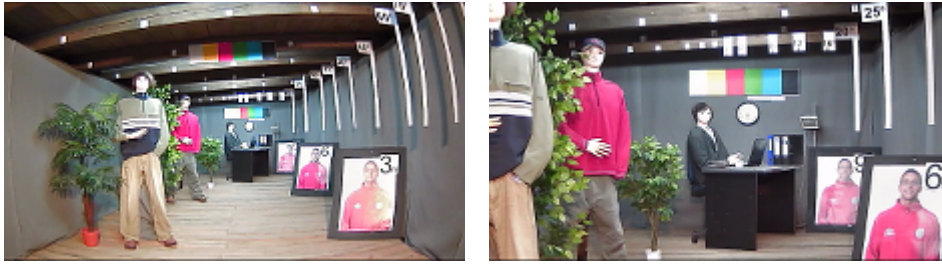
- 1) Move the joystick in the correct direction
  - 2) Turn on the power
- In the kit:



**OUR TESTS**

AHD:

Camera image at artificial illumination (about 30Lux):



Camera image at night conditions with internal built-in IR illuminator on:



Camera image at direct strong light opposite to camera:



## OUR OPINIONS



- Poor quality image in CVBS standard.

## PACKAGE

Dimensions (L x W x H): 0x0x0 mm	Gross Weight: 0 kg
----------------------------------	--------------------