

Code: DH-IPC-HFW5421EP-Z

IP CAMERA **DH-IPC-HFW5421EP-Z** - 4.0 Mpx 2.7 ... 12 mm - MOTOZOOM DAHUA

Net: **306.10 EUR** Gross: **306.10 EUR**

IP camera with efficient H.264 image compression algorithm for clear and smooth video streaming at maximal resolution of 2688 x 1520 (4.0 MPx). Due to above it is perfect solution for surveillance systems requiring persons or vehicles recognition. The used motozoom lens with 2.7 ... 12 mm focal length allows to remote view angle adjustment.

Very easy operation by Internet Explorer browser allows the users to convenient and remote support, and also remote management of the camera. Included camera software enables management and integrated monitoring of many network cameras.



SPECIFICATION

Standard:	TCP/IP
Sensor:	1/3 " Progressive Scan CMOS
Matrix size:	4.0 Mpx
Resolution:	2688 x 1520 - 4.0 Mpx , 2560 x 1440 - 3.6 Mpx , 2304 x 1296 - 3.0 Mpx , 1920 x 1080 - 1080p 1280 x 1024 - 1.4 Mpx 1280 x 960 - 1.3 Mpx 1280 x 720 - 720p
Lens:	2.7 ... 12 mm - Motozoom
View angle:	<ul style="list-style-type: none">• 100 ° ... 33 ° (manufacturer data)• 93 ° ... 32 ° (our tests result)
Compression:	H.264 / MJPEG
S/N ratio:	> 50 dB (AGC off)
Range of IR illumination:	50 m
Alarm inputs / outputs:	2 / 1
Bitrate:	384 ... 10240 kbps - H.264
Main stream frame rate:	20 fps @ 4.0 Mpx
Network interface:	10/100 Base-T (RJ-45)
Default admin user / password:	admin / admin
Network protocols:	IPv4/IPv6, HTTP, HTTPS, SSL, TCP/IP, UDP, UPnP, ICMP, IGMP, SNMP, RTSP, RTP, SMTP, NTP, DHCP, DNS, PPPOE, DDNS, FTP, IP Filter, QoS, Bonjour
Default IP address:	192.168.1.108

DELTA-OPTI Monika Matysiak; <https://www.delta.poznan.pl>
POL; 60-713 Poznań; Graniczna 10
e-mail: delta-opti@delta.poznan.pl; tel: +(48) 61 864 69 60

Audio:	<ul style="list-style-type: none"> • External microphone input • Audio output • Bi-directional audio streaming support • Audio detection
Web browser access ports:	80, 37777
PC client access ports:	37777
WEB Server:	Built-in, NVR compliance
Memory card slot:	Micro SD memory cards up to 128GB support (possible local recording)
Mobile client access ports:	37777
Max. number of on-line users:	20
Port ONVIF:	80
ONVIF:	2.42
RTSP URL:	rtsp://admin:hasło@192.168.1.108:554/cam/realmonitor?channel=1&subtype=0 - Main stream rtsp://admin:hasło@192.168.1.108:554/cam/realmonitor?channel=1&subtype=1 - Sub stream
Mobile phones support:	Port 37777 <ul style="list-style-type: none"> • Android: Free application DMSS • iOS (iPhone): Free application DMSS
RS-485 interface:	—
Main features:	<ul style="list-style-type: none"> • ICR - Movable InfraRed filter • DNR - Digital Noise Reduction • AGC - Automatic Gain Control • ABF - (Auto Back Focus) - auto focus correction during day/night operation modes switching • WB - White Balance (ATW/AWB/manual/indoor/outdoor) • WDR - Wide Dynamic Range • BLC - configurable Back Light Compensation • HLC - High Light Compensation (spot) • Day/Night mode (color/b&w/auto) • Audio detection • IVS analysis - intrusion, crossing the line (tripwire), scene changing, abandoned/missing object, face detection • Motion Detection • Configurable Privacy Zones • Mirror - Mirror image • Sharpness - sharper image outlines
Power consumption:	< 11.5 W
Operation temp:	-40 °C ... 60 °C
Color:	White
"Index of Protection":	IP67
Power supply:	<ul style="list-style-type: none"> • PoE (802.3af), • 12 V DC / 940 mA
Housing:	Compact, Metal / Plastic
Supported languages:	English, Polish
Manufacturer / Brand:	DAHUA
Weight:	0.992 kg
Dimensions:	274 x 95 x 95 mm
Guarantee:	3 years

PRESENTATION



DELTA-OPTI Monika Matysiak; <https://www.delta.poznan.pl>
POL; 60-713 Poznań; Graniczna 10
e-mail: delta-opti@delta.poznan.pl; tel: +(48) 61 864 69 60



Side view:



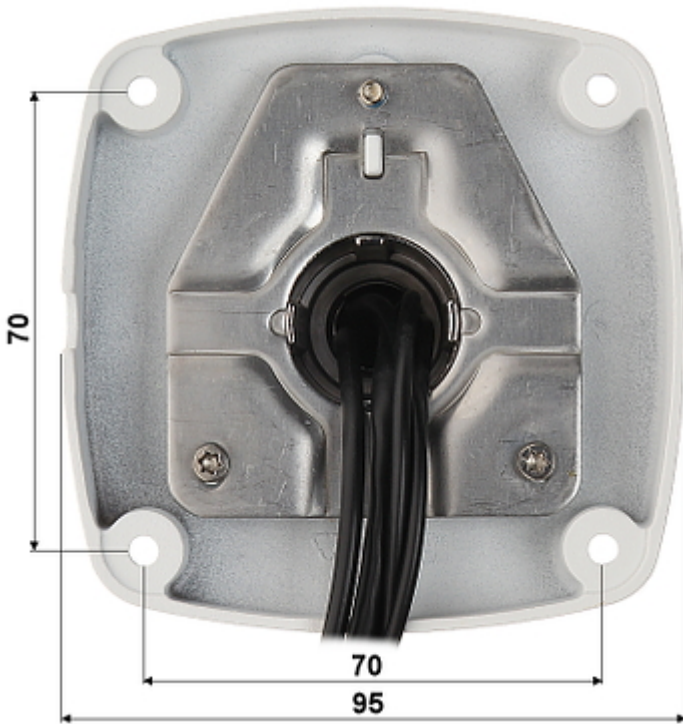
Bottom view:



Bottom view (after remove the cover):



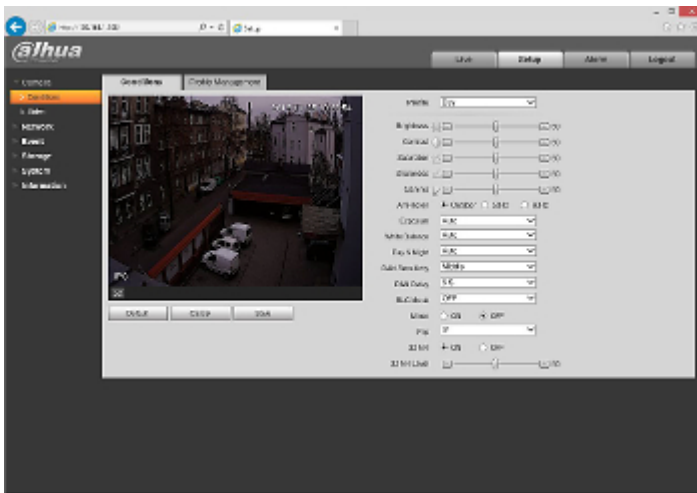
Camera mounting side view:



In the kit:



Example captures of device interface:



OUR TESTS

Camera image at artificial illumination (about 30Lux):



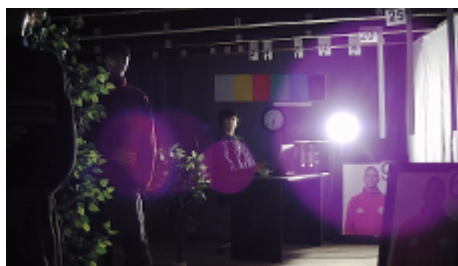
Camera image at night conditions with internal built-in IR illuminator on:



Camera image at direct strong light opposite to camera:



DELTA-OPTI Monika Matysiak; <https://www.delta.poznan.pl>
 POL; 60-713 Poznań; Graniczna 10
 e-mail: delta-opti@delta.poznan.pl; tel: +(48) 61 864 69 60



OUR OPINIONS



- Motozoom lens.

PACKAGE

Dimensions (L x W x H): 0x0x0 mm	Gross Weight: 0 kg
----------------------------------	--------------------

