

Code: IPC-HFW8232EP-ZH

IP CAMERA **IPC-HFW8232EP-ZH** - 1080p 4.1 ... 16.4 mm - MOTOZOOM DAHUA

Net: **520.43 EUR** Gross: **520.43 EUR**

IP camera with efficient H.264 image compression algorithm for clear and smooth video streaming at maximal resolution of 1080p. Due to above it is perfect solution for surveillance systems requiring persons or vehicles recognition.

The used motozoom lens with 4.1 ... 16.4 mm focal length allows to remote view angle adjustment.

PoE powering possibility, compatible with the 802.3at standard makes the device more universal and easier to install.

The camera is equipped with a built-in heater with a thermostat.



SPECIFICATION

Standard:	TCP/IP
Sensor:	1/1.9 " Progressive Scan CMOS
Matrix size:	2.1 Mpx
Resolution:	1920 x 1080 - 1080p 1280 x 960 - 1.3 Mpx 1280 x 720 - 720p
Lens:	4.1 ... 16.4 mm - Motozoom
View angle:	• 80 ° ... 32 ° (manufacturer data) • 80 ° ... 33 ° (our tests result)
Compression:	H.265 / H.264 / MJPEG
S/N ratio:	> 50 dB
Range of IR illumination:	50 m
Alarm inputs / outputs:	2 / 1
Bitrate:	• 24 ... 5632 kbps - H.265 • 14 ... 9216 kbps - H.264
Main stream frame rate:	50 fps @ 1080p
Network interface:	100/1000 Base-T (RJ-45)
Network protocols:	HTTP, HTTPS, TCP, ARP, RTSP, RTP, UDP, SMTP, FTP, DHCP, DNS, DDNS, PPPoE, IPv4/IPv6, QoS, UPnP, NTP, Bonjour, IEEE 802.1x, Multicast, ICMP, IGMP, SNMP
Audio:	• External microphone input • Audio output • Bi-directional audio streaming support • Audio detection
Default IP address:	192.168.1.108

DELTA-OPTI Monika Matysiak; <https://www.delta.poznan.pl>
POL; 60-713 Poznań; Graniczna 10
e-mail: delta-opti@delta.poznan.pl; tel: +(48) 61 864 69 60

Default admin user / password:	admin / admin
Web browser access ports:	80, 37777
PC client access ports:	37777
WEB Server:	Built-in, NVR compliance
Memory card slot:	Micro SD memory cards up to 128GB support (possible local recording)
Mobile client access ports:	37777
Max. number of on-line users:	20
Port ONVIF:	80
ONVIF:	2.42
RTSP URL:	rtsp://admin:hasło@192.168.1.108:554/cam/realmonitor?channel=1&subtype=0 - Main stream rtsp://admin:hasło@192.168.1.108:554/cam/realmonitor?channel=1&subtype=1 - Sub stream
Mobile phones support:	Port no.: 37777 or access by a cloud (P2P) • Android: Free application DMSS • iOS (iPhone): Free application DMSS
RS-485 interface:	—
Main features:	<ul style="list-style-type: none"> • The camera is equipped with a built-in heater with a thermostat, • WDR - 120 dB - Wide Dynamic Range, • 3D-DNR - Digital Noise Reduction, • ROI - improve the quality of selected parts of image • F-DNR (Defog) - Reduction of image noise caused by precipitation • EIS - Electronic Image Stabilization • ICR - Movable InfraRed filter • D-ZOOM - Digital Zoom • WB - White Balance (ATW/AWB/manual/indoor/outdoor) • BLC - configurable Back Light Compensation • HLC - High Light Compensation (spot) • Day/Night mode (color/b&w/auto) • Audio detection • Heat map - the selection in the image by corresponding colors the areas with different traffic • IVS analysis : crossing the line (tripwire), intrusion, abandoned/missing object, face detection, people counting • Motion Detection • Configurable Privacy Zones • Mirror - Mirror image • Sharpness - sharper image outlines
Power supply:	<ul style="list-style-type: none"> • PoE (802.3at), • 12 V DC / 1080 mA
Power consumption:	< 13 W
Housing:	Compact, Metal / Plastic
Color:	White
"Index of Protection":	IP67
Operation temp:	-40 °C ... 60 °C
Weight:	1.176 kg
Dimensions:	274 x 95 x 95 mm
Supported languages:	English, Polish
Manufacturer / Brand:	DAHUA
Guarantee:	3 years

PRESENTATION



DELTA-OPTI Monika Matysiak; <https://www.delta.poznan.pl>
POL; 60-713 Poznań; Graniczna 10
e-mail: delta-opti@delta.poznan.pl; tel: +(48) 61 864 69 60



Side view:

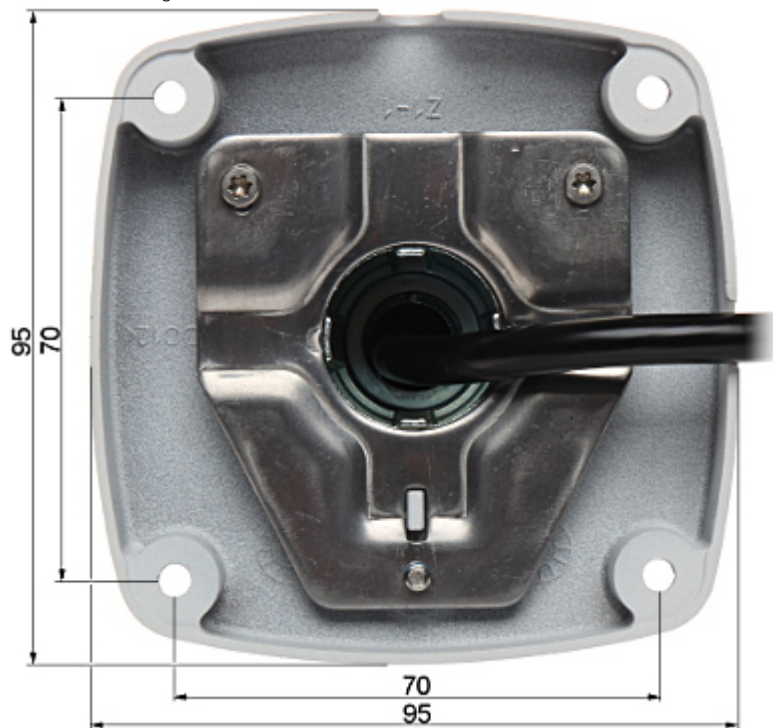


Bottom view:





Camera mounting side view:



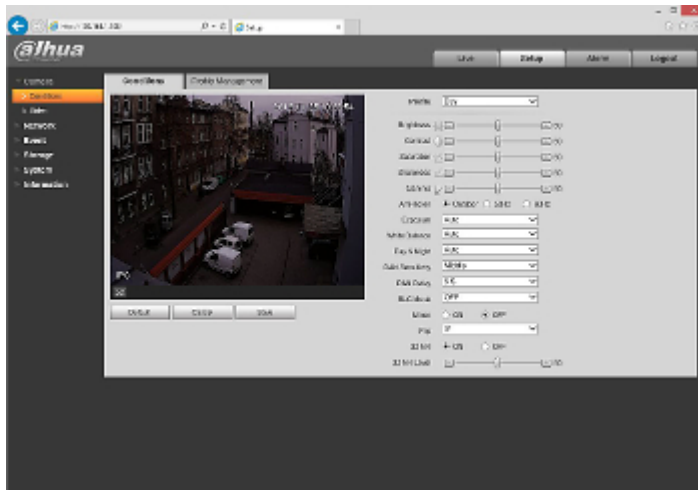
Camera connectors:



In the kit:

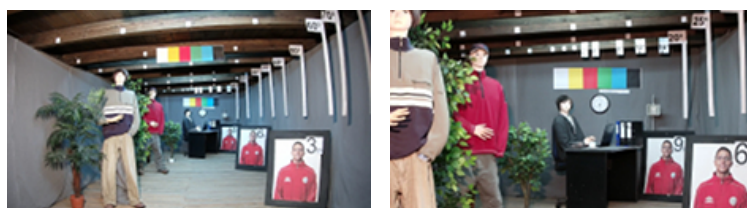


Example captures of device interface:



OUR TESTS

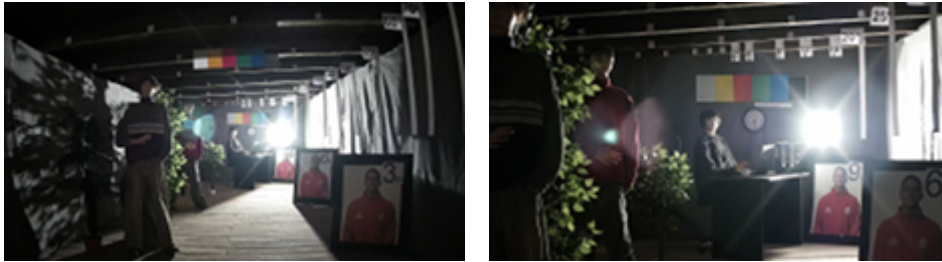
Camera image at artificial illumination (about 30Lux):



Camera image at night conditions with internal built-in IR illuminator on:



Camera image at direct strong light opposite to camera:



OUR OPINIONS



- o Motozoom lens.

PACKAGE

Dimensions (L x W x H): 0x0x0 mm	Gross Weight: 0 kg
----------------------------------	--------------------