

Code: DH-IPC-HFW1200SP-W

IP CAMERA **DH-IPC-HFW1200SP-W** Wi-Fi, - 1080p 3.6 mm DAHUA

Net: **1 174.77 DKK** Gross: **1 174.77 DKK**

IP camera with efficient H.264 image compression algorithm for clear and smooth video streaming at maximal resolution of 1080p. Very easy operation by Internet Explorer browser allows the users to convenient and remote support, and also remote management of the camera. Included camera software enables management and integrated monitoring of many network cameras. The used Wi-Fi module allows to remote communication with camera for max. distance up to 50 m.



SPECIFICATION

Standard:	TCP/IP
Sensor:	1/3 " Progressive Scan CMOS
Matrix size:	3.0 Mpx
Scanning system:	Progressive
Resolution:	1920 x 1080 - 1080p 1280 x 1024 - 1.4 Mpx 1280 x 960 - 1.3 Mpx 1280 x 720 - 720p 704 x 576 - D1
Lens:	3.6 mm
View angle:	• 72 ° (manufacturer data) • 63 ° (our tests result)
Range of IR illumination:	30 m
S/N ratio:	> 50 dB
RS-485 interface:	—
Memory card slot:	—
Image compression method:	H.264H / H.264B / H.264 / MJPEG
Alarm inputs / outputs:	—
Audio:	—
Bitrate:	1024 kbps ... 8192 kbps - H.264
Main stream frame rate:	25 fps @ 1920 x 1080

DELTA-OPTI Monika Matysiak; <https://www.delta.poznan.pl>
POL; 60-713 Poznań; Graniczna 10
e-mail: delta-opti@delta.poznan.pl; tel: +(48) 61 864 69 60

Network interface:	10/100 Base-T (RJ-45)
Network protocols:	IPv4/IPv6, HTTP, HTTPS, TCP/IP, UDP, UPnP, ICMP, IGMP, RTSP, RTP, SMTP, NTP, DHCP, DNS, PPPOE, DDNS, FTP, IP Filter, QoS
WEB Server:	Built-in
Max. number of on-line users:	20
ONVIF:	2.0
Main features:	<ul style="list-style-type: none"> • Wi-Fi Module - IEEE 802.11 b/g/n, Range : 50 m (open area) • D-WDR - Wide Dynamic Range • 3D-DNR - Digital Noise Reduction • BLC/HLC - Back Light / High Light Compensation • Possibility to change the resolution, quality and bit rate • Motion Detection • Configurable Privacy Zones • Mirror - Mirror image
Power supply:	12 V DC / 580 mA
Mobile phones support:	<p>Port no.: 37777 or access by a cloud (P2P)</p> <ul style="list-style-type: none"> • Android: Free application DMSS • iOS (iPhone): Free application DMSS <p>There are also paid versions of mobile applications: gDMSS Plus, iDMSS Plus, wDMSS plus</p>
Housing:	Compact - Metal
Color:	White
Operation temp:	-30 °C ... 50 °C
"Index of Protection":	IP66
Weight:	0.45 kg
Dimensions:	144 x 68 x 67 mm
Supported languages:	English, Polish
Manufacturer / Brand:	DAHUA
Guarantee:	3 years

PRESENTATION





Side view:



Camera mounting side view:

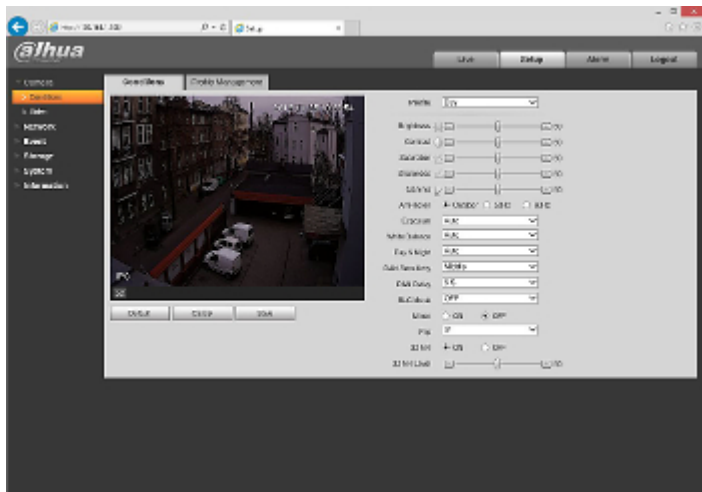


In the kit:



Example captures of device interface:





OUR TESTS

Camera image at artificial illumination (about 30Lux):



Camera image at night conditions with internal built-in IR illuminator on:



Camera image at direct strong light opposite to camera:



PACKAGE

Dimensions (L x W x H): 0x0x0 mm	Gross Weight: 0 kg
----------------------------------	--------------------



DELTA-OPTI Monika Matysiak; <https://www.delta.poznan.pl>
POL; 60-713 Poznań; Graniczna 10
e-mail: delta-opti@delta.poznan.pl; tel: +(48) 61 864 69 60