

Code: BCS-P-264R3WSA-G

IP VANDALPROOF CAMERA **BCS-P-264R3WSA-G** - 4.0 Mpx 2.8 ... 12 mm - MOTOZOOM BCS POINT

Net: **274.46 EUR** Gross: **274.46 EUR**

IP camera with efficient H.264 / H.265 image compression algorithm for clear and smooth video streaming at maximal resolution of 2592 x 1520 (4.0 MPx). Due to above it is perfect solution for surveillance systems requiring persons or vehicles recognition. The used motozoom lens with 2.8 ... 12 mm focal length allows to remote view angle adjustment.

The range of IR illumination according to the manufacturer data, depends on outer conditions (visibility - air transparency, environment, wall colors ie. scene reflectance).

PoE powering possibility, compatible with the 802.3af standard makes the device more universal and easier to install.

Camera is according to IP66 Index of Protection norm.



SPECIFICATION

Standard:	TCP/IP
Sensor:	1/3 " Progressive Scan CMOS
Matrix size:	4.0 Mpx
Resolution:	2592 x 1520 - 4.0 Mpx , 2560 x 1440 - 3.7 Mpx , 2048 x 1520 - 3 Mpx , 1920 x 1080 - 1080p
Lens:	2.8 ... 12 mm - Motozoom
View angle:	• 95 ° ... 29 ° (manufacturer data) • 90 ° ... 32 ° (our tests result)
S/N ratio:	> 55 dB
Range of IR illumination:	30 m
RS-485 interface:	—
Memory card slot:	Micro SD memory cards up to 128GB support (possible local recording)
Image compression method:	H.265 / H.264 / MJPEG
Alarm inputs / outputs:	—
Audio:	• External microphone input • Audio output • Audio detection
Bitrate:	128 ... 16384 kbps
Network interface:	10/100 Base-T (RJ-45)

DELTA-OPTI Monika Matysiak; <https://www.delta.poznan.pl>
POL; 60-713 Poznań; Graniczna 10
e-mail: delta-opti@delta.poznan.pl; tel: +(48) 61 864 69 60

Network protocols:	L2TP, IPv4/IPv6, IGMP, ICMP, ARP, TCP, UDP, DHCP, PPPoE, RTP, RTSP, QoS, DNS, DDNS, NTP, FTP, UPnP, HTTP, SMTP, SNMP, P2P
WEB Server:	Built-in, Web Viewer
Max. number of on-line users:	10
ONVIF:	2.4
Mobile phones support:	Port no.: 80 or access by a cloud (P2P) <ul style="list-style-type: none"> • Android: Free application BCS Point • iOS (iPhone): Free application BCS Point
Default admin user / password:	admin / 123456
Default IP address:	DHCP
Web browser access ports:	80, 554
PC client access ports:	80
Mobile client access ports:	80
Port ONVIF:	80
RTSP URL:	rtsp://192.168.1.66:554/unicast/c1/s0/live - Main stream rtsp://192.168.1.66:554/unicast/c1/s1/live - Sub stream
Main stream frame rate:	<ul style="list-style-type: none"> • 20 fps @ 4.0 Mpx • 25 fps @ 3.7 Mpx
Main features:	<ul style="list-style-type: none"> • WDR - 120 dB - Wide Dynamic Range • 2D-DNR, 3D-DNR - Digital Noise Reduction • ROI - improve the quality of selected parts of image • F-DNR (Defog) - Reduction of image noise caused by precipitation Additional "Spot" CVBS output - allows to quick view the image from camera and its configuration without the need to disconnect it from monitoring system • ICR - Movable InfraRed filter • BLC - configurable Back Light Compensation • HLC - High Light Compensation (spot) • Audio detection • Intelligent image analysis, scene changing, crossing the line (tripwire), intrusion, face detection, people counting • D-ZOOM - Digital Zoom • Day/Night mode (color/b&w/auto) • Configurable Privacy Zones
Power supply:	<ul style="list-style-type: none"> • PoE (802.3af), • 12 V DC / 600 mA
Power consumption:	≤ 7.2 W
Housing:	Dome - Metal
Color:	Graphite
Vandal-proof:	IK10
"Index of Protection":	IP66
Operation temp:	-40 °C ... 60 °C
Weight:	0.92 kg
Dimensions:	Ø 148 x 111 mm
Supported languages:	English, German, Polish, Russian, Slovenian
Manufacturer / Brand:	BCS POINT
Guarantee:	3 years

PRESENTATION

Camera view after remove the Dome cover:



DELTA-OPTI Monika Matysiak; <https://www.delta.poznan.pl>
POL; 60-713 Poznań; Graniczna 10
e-mail: delta-opti@delta.poznan.pl; tel: +(48) 61 864 69 60



Memory card slot:



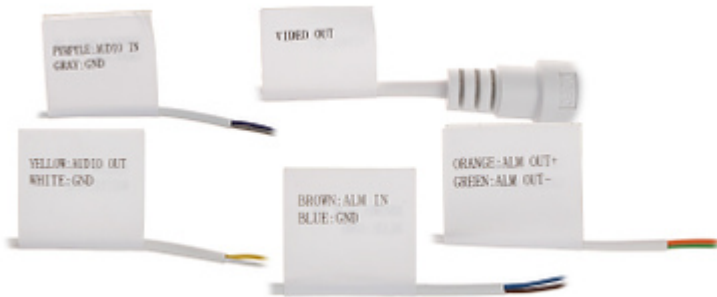
Mounting side view:



Camera connectors:



Connectors description:



In the kit:



OUR TESTS

Camera image at artificial illumination (about 30Lux):



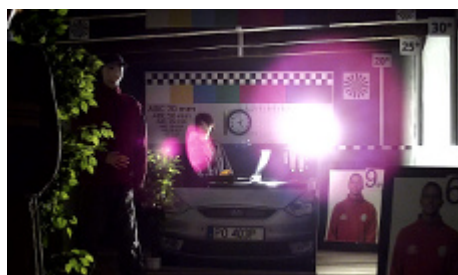
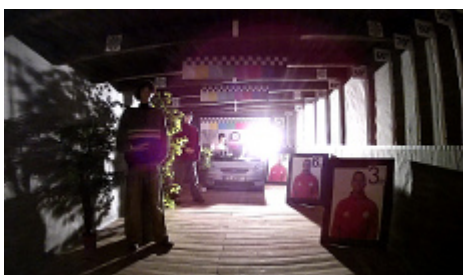
Camera image at night conditions with internal built-in IR illuminator on:



DELTA-OPTI Monika Matysiak; <https://www.delta.poznan.pl>
POL; 60-713 Poznań; Graniczna 10
e-mail: delta-opti@delta.poznan.pl; tel: +(48) 61 864 69 60



Camera image at direct strong light opposite to camera:



PACKAGE

Dimensions (L x W x H): 0x0x0 mm	Gross Weight: 0 kg
----------------------------------	--------------------

