

Code: APTI-14V3-2812B

IP VANDALPROOF CAMERA **APTI-14V3-2812B** - 960p 2.8 ... 12 mm

Net: **30.77 EUR** Gross: **30.77 EUR**

IP camera with efficient H.264 image compression algorithm for clear and smooth video streaming at maximal resolution of 1280x960. Very easy operation by Internet Explorer browser allows the users to convenient and remote support, and also remote management of the camera. Included camera software enables management and integrated monitoring of many network cameras. Its using allows to create large surveillance system.

ICR - The movable IR filter allows to perfect colors reproduction in daylight and wide gray-scale with high sharpness of the image at night mode.



SPECIFICATION

| | |
|-------------------------------|---|
| Standard: | TCP/IP |
| Digital Image Processor: | Hisilicon 3518C |
| Sensor: | 1/3 " Sony CMOS IMX225 |
| Matrix size: | 1.4 Mpx |
| Resolution: | 1280 x 960 - 960p 1280 x 720 - 720p |
| Lens: | 2.8 ... 12 mm, 2.0 Mpx |
| View angle: | 81 ° ... 23 ° (manufacturer data) 83 ° ... 33 ° (our tests result) |
| S/N ratio: | > 50 dB |
| Range of IR illumination: | 30 m |
| Memory card slot: | — |
| Image compression method: | H.264 |
| Bitrate: | 64 ... 12000 kbps |
| Main stream frame rate: | max. 25 fps - 1.3 Mpx |
| Network interface: | 10/100 Base-T (RJ-45) |
| Alarm inputs / outputs: | — |
| Network protocols: | RTSP, FTP, PPPOE, DHCP, DDNS, NTP, UPnP, TCP |
| Audio: | — |
| WEB Server: | Built-in |
| Max. number of on-line users: | 10 |
| ONVIF: | 2.0 |
| RS-485 interface: | — |

DELTA-OPTI Monika Matysiak; <https://www.delta.poznan.pl>
POL; 60-713 Poznań; Graniczna 10
e-mail: delta-opti@delta.poznan.pl; tel: +(48) 61 864 69 60

| | |
|--------------------------------|--|
| Mobile phones support: | — |
| Default admin user / password: | admin / admin |
| Default IP address: | 192.168.1.168 |
| Web browser access ports: | 80 |
| PC client access ports: | 80 |
| Mobile client access ports: | 80 |
| Port ONVIF: | 80 |
| RTSP URL: | rtsp://user:password@ip_address:80/0 - Main stream rtsp://user:password@ip_address:80/1 - Sub stream |
| Main features: | <ul style="list-style-type: none"> • ICR - Movable InfraRed filter • Possibility to change the resolution, quality and bit rate • Motion Detection • Privacy zones • Configurable: brightness, contrast, saturation • Sharpness - sharper image outlines • Mirror - Mirror image • Day/Night mode - configurable |
| Power supply: | 12 V DC / 580 mA |
| Housing: | Dome - Metal |
| Vandal-proof: | ✓ |
| Color: | Black |
| "Index of Protection": | IP66 |
| Operation temp: | -20 °C ... 55 °C |
| Weight: | 0.63 kg |
| Dimensions: | Ø 120 x 95 mm |
| Supported languages: | English |
| Manufacturer / Brand: | APTI |
| Guarantee: | 2 years |

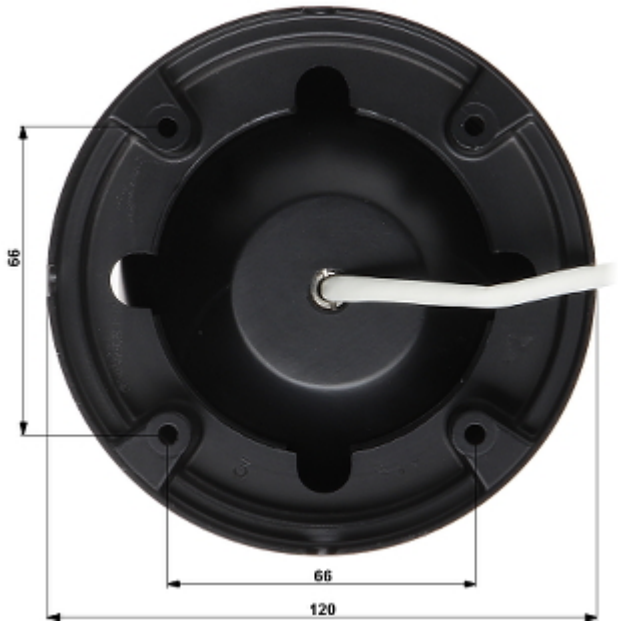
PRESENTATION

Camera view after remove the Dome cover - camera lens adjustment knobs are visible:

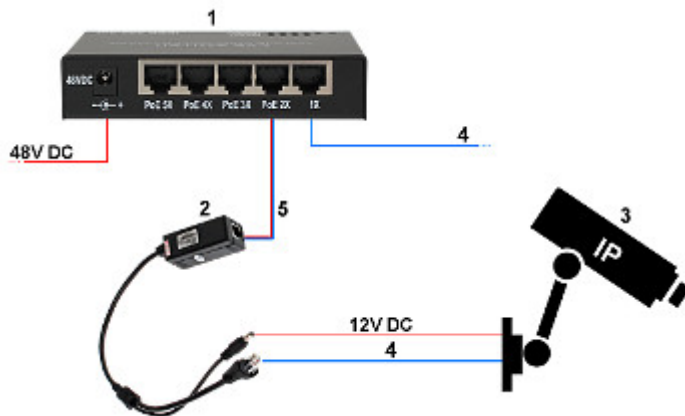


Mounting side view:

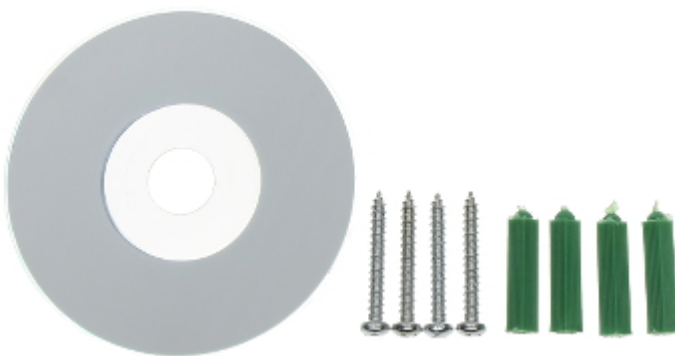




See how you can power the camera in PoE standard:



- 1. SWITCH PoE
 - 2. POE-802.3AF/C
 - 3. IP Camera
 - 4. Ethernet
 - 5. Ethernet + PoE
- In the kit:

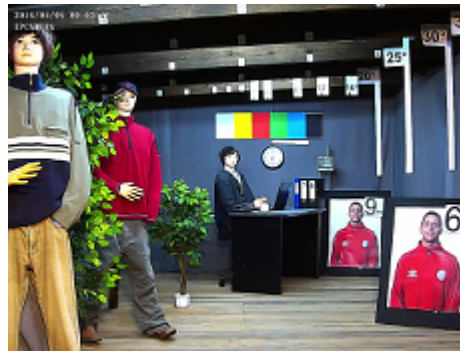
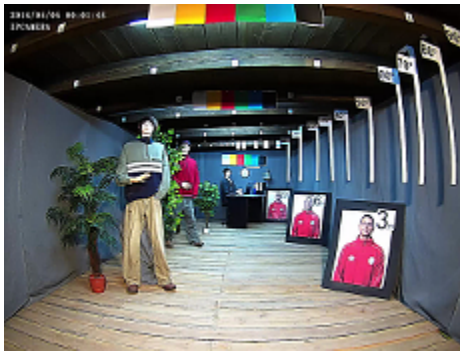


Configuration and operation of the FreeIP cloud:

:

OUR TESTS

Camera image at artificial illumination (about 30Lux):



Camera image at night conditions with internal built-in IR illuminator on:



Camera image at direct strong light opposite to camera:



Record from camera during daylight operation:

:

Record from camera during night conditions operation:

:

OUR OPINIONS



- The DNR function reducing the image noise is not implemented in the camera.

PACKAGE

| | |
|----------------------------------|--------------------|
| Dimensions (L x W x H): 0x0x0 mm | Gross Weight: 0 kg |
|----------------------------------|--------------------|