

Code: DH-IPC-HDBW1531EP-03

# IP VANDALPROOF CAMERA **DH-IPC-HDBW1531EP-03** - 5.0 Mpx 3.6 mm DAHUA

Net: **174.31 EUR** Gross: **174.31 EUR**

IP camera with efficient H.264 / H.265 image compression algorithm for clear and smooth video streaming at maximal resolution of 2592 x 1944 (5.0 MPx).  
PoE powering possibility, compatible with the 802.3af standard makes the device more universal and easier to install.  
Camera is according to IP67 Index of Protection norm.



## SPECIFICATION

|                           |   |
|---------------------------|---|
| Standard:                 | TCP/IP  |
| Sensor:                   | 1/2.7 " Progressive Scan CMOS   |
| Matrix size:              | 5.0 Mpx   |
| Scanning system:          | Progressive   |
| Resolution:               | 2592 x 1944 - 5.0 Mpx ,<br>2688 x 1520 - 4.0 Mpx ,<br>2304 x 1296 - 3.0 Mpx ,<br>1920 x 1080 - 1080p ,<br>1280 x 960 - 1.3 Mpx ,<br>1280 x 720 - 720p |
| Lens:                     | 3.6 mm  |
| View angle:               | <ul style="list-style-type: none"><li>• 70 ° (manufacturer data)</li><li>• 75 ° (our tests result)</li></ul>  |
| Range of IR illumination: | 30 m  |
| S/N ratio:                | > 50 dB   |
| RS-485 interface:         | —   |
| Memory card slot:         | —   |
| Image compression method: | H.265 / H.265+ / H.264 / H.264 / MJPEG  |
| Alarm inputs / outputs:   | —   |
| Audio:                    | —   |
| Bitrate:                  | 32 ... 10240 kbps - H.264<br>12 ... 8448 kbps - H.265   |

|                                |   |
|--------------------------------|---|
| Main stream frame rate:        | 15 fps @ 2592 x 1944<br>25 fps @ 2304 x 1296  |
| Network interface:             | 10/100 Base-T (RJ-45)   |
| Network protocols:             | HTTP, HTTPS, TCP, ARP, RTSP, RTP, UDP, SMTP, FTP, DHCP, DNS, DDNS, PPPoE, IPv4/IPv6, QoS, UPnP, NTP, Bonjour, IEEE 802.1x, Multicast, ICMP, IGMP  |
| WEB Server:                    | Built-in  |
| Max. number of on-line users:  | 20  |
| ONVIF:                         | 16.12   |
| Main features:                 | <ul style="list-style-type: none"> <li>• WDR - 120 dB - Wide Dynamic Range</li> <li>• 3D-DNR - Digital Noise Reduction</li> <li>• ROI - improve the quality of selected parts of image</li> <li>• BLC/HLC - Back Light / High Light Compensation</li> <li>• Possibility to change the resolution, quality and bit rate</li> <li>• Motion Detection</li> <li>• IVS analysis : crossing the line (tripwire), intrusion</li> <li>• Configurable Privacy Zones</li> <li>• D-ZOOM - Digital Zoom</li> <li>• Mirror - Mirror image</li> </ul> |
| Mobile phones support:         | Port no.: 37777 or access by a cloud (P2P)<br>• Android: Free application <a href="#">DMSS</a> , Android: Free application <a href="#">IMOU</a><br>• iOS (iPhone): Free application <a href="#">DMSS</a> , iOS (iPhone): Free application <a href="#">IMOU</a>  |
| Default admin user / password: | admin / -<br>The administrator password should be set at the first start  |
| Default IP address:            | 192.168.1.108   |
| Web browser access ports:      | 80, 37777   |
| PC client access ports:        | 37777   |
| Mobile client access ports:    | 37777   |
| Port ONVIF:                    | 80  |
| RTSP URL:                      | rtsp://admin:hasło@192.168.1.108:554/cam/realmonitor?channel=1&subtype=0 - Main stream<br>rtsp://admin:hasło@192.168.1.108:554/cam/realmonitor?channel=1&subtype=1 - Sub stream   |
| Power supply:                  | <ul style="list-style-type: none"> <li>• PoE (802.3af),</li> <li>• 12 V DC / 350 mA</li> </ul>  |
| Power consumption:             | < 4.2 W   |
| Housing:                       | Dome - Metal  |
| Color:                         | White   |
| Vandal-proof:                  | IK10  |
| "Index of Protection":         | IP67  |
| Operation temp:                | -30 °C ... 60 °C  |
| Weight:                        | 0.348 kg  |
| Dimensions:                    | Ø 110 x 81 mm   |
| Supported languages:           | English, Polish   |
| Manufacturer / Brand:          | DAHUA   |
| Guarantee:                     | <b>3 years</b>  |

## PRESENTATION

Camera view after remove the Dome cover:



DELTA-OPTI Monika Matysiak; <https://www.delta.poznan.pl>  
 POL; 60-713 Poznań; Graniczna 10  
 e-mail: [delta-opti@delta.poznan.pl](mailto:delta-opti@delta.poznan.pl); tel: +(48) 61 864 69 60



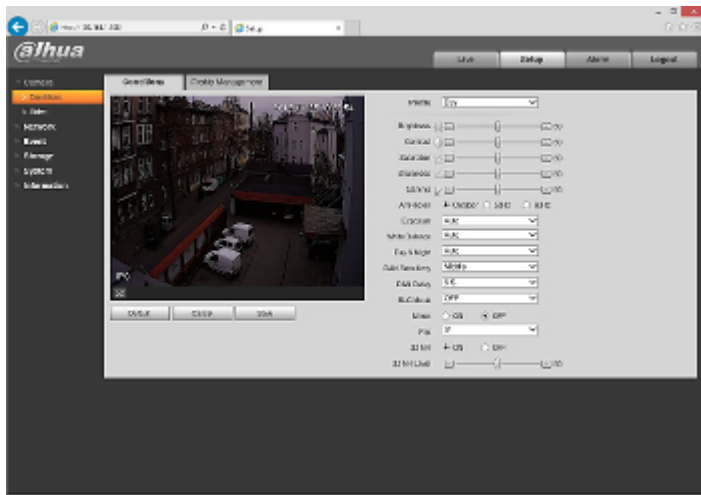


In the kit:



Example captures of device interface:





## OUR TESTS

Camera image at artificial illumination (about 30Lux):



Camera image at night conditions with internal built-in IR illuminator on:



Camera image at direct strong light opposite to camera:



## PACKAGE

|                                  |                    |
|----------------------------------|--------------------|
| Dimensions (L x W x H): 0x0x0 mm | Gross Weight: 0 kg |
|----------------------------------|--------------------|

