

Code: DH-HAC-HDBW2231FP-02

# AHD, HD-CVI, HD-TVI, PAL VANDALPROOF CAMERA **DH-HAC-HDBW2231FP-02** - 1080p 2.8 mm DAHUA

Net: **160.42 CAD** Gross: **160.42 CAD**

Megapixel camera with 1/2.8" CMOS sensor and AHD / HD-CVI / HD-TVI / PAL. Thanks to the "Starlight" technology used, the camera only needs very low lighting to obtain a clear color image.

The AHD / HD-CVI / HD-TVI interface allows to transmission of analog video signal via coaxial cable in 1080p resolution. It enables the transmission of HD resolution images for even 500 m distance with keeping the low costs of the installation. During transmission there are no delays and is maintained the original, high quality image.

The camera has a very flat profile, it's only 51 mm out from the ceiling.

In the case of video transmission using a twisted pair cable and matching transformers (balun), be aware of the possibility of signal reflections and interfering signals.

Camera is according to IP67 Index of Protection norm. Attention! The camera default setting is HD-CVI standard. To change the camera standard you need use the PFM820 controller, available separately.



## SPECIFICATION

Standard:	AHD, HD-CVI, HD-TVI, PAL
Sensor:	1/2.8 " CMOS
Matrix size:	2.1 Mpx
Resolution:	1920 x 1080 - 1080p , 1280 x 720 - 720p , 960 x 576 - 960H, PAL
Range of IR illumination:	20 m
IR illuminator power adjustment:	Automatic
Lens:	2.8 mm
View angle:	• 110 ° (manufacturer data) • 104 ° (our tests result)
IR illuminator support:	ICR - Movable InfraRed filter
S/N ratio:	> 65 dB
Video output:	AHD / HD-CVI / HD-TVI / PAL, 1 Vpp / 75 Ω
Audio:	—
Main features:	<ul style="list-style-type: none"><li>• WDR - 120 dB - Wide Dynamic Range</li><li>• 2D-DNR / 3D-DNR - Digital Noise Reduction</li><li>• Sense-UP - (Slow Shutter) - Increase the sensor sensitivity</li><li>• F-DNR (Defog) - Reduction of image noise caused by precipitation</li><li>• ICR - Movable InfraRed filter</li><li>• BLC/HLC - Back Light / High Light Compensation</li><li>• Auto White Balance</li><li>• AGC - Automatic Gain Control</li><li>• Mirror - Mirror image</li><li>• Motion Detection - max. 4 zones</li><li>• Privacy zones - max. 8</li><li>• IR illuminator optimization</li><li>• Sharpness - sharper image outlines</li></ul>

DELTA-OPTI Monika Matysiak; <https://www.delta.poznan.pl>  
POL; 60-713 Poznań; Graniczna 10  
e-mail: [delta-opti@delta.poznan.pl](mailto:delta-opti@delta.poznan.pl); tel: +(48) 61 864 69 60

OSD menu:	OSD menu available via DAHUA recorder
Power supply:	12 V DC / 200 mA
Power consumption:	≤ 2.4 W
Housing:	Dome, Metal
Color:	White
Vandal-proof:	IK10
"Index of Protection":	IP67
Operation temp:	-40 °C ... 60 °C
Weight:	0.32 kg
Dimensions:	Ø 106 x 51 mm
Manufacturer / Brand:	DAHUA
Guarantee:	<b>3 years</b>

## PRESENTATION

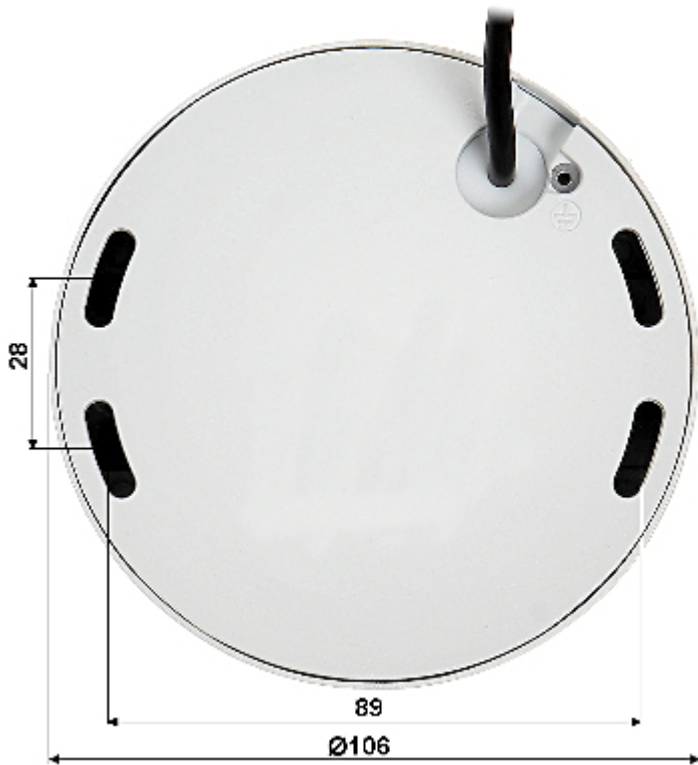
Internal view of the housing:



Camera connectors:



Dimensions:



In the kit:



## OUR TESTS

AHD:

Camera image at artificial illumination (about 30Lux):



DELTA-OPTI Monika Matysiak; <https://www.delta.poznan.pl>  
POL; 60-713 Poznań; Graniczna 10  
e-mail: [delta-opti@delta.poznan.pl](mailto:delta-opti@delta.poznan.pl); tel: +(48) 61 864 69 60

Camera image at night conditions with internal built-in IR illuminator on:



Camera image at direct strong light opposite to camera:



HD-CVI:

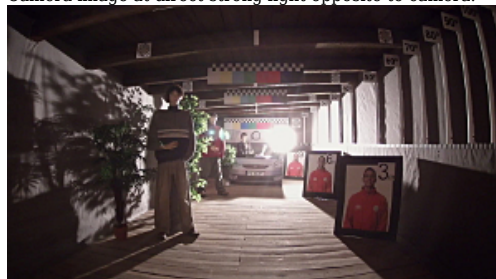
Camera image at artificial illumination (about 30Lux):



Camera image at night conditions with internal built-in IR illuminator on:



Camera image at direct strong light opposite to camera:



HD-TVI:

Camera image at artificial illumination (about 30Lux):



Camera image at night conditions with internal built-in IR illuminator on:



Camera image at direct strong light opposite to camera:



## OUR OPINIONS



- o Thanks to the "Starlight" technology used, the camera only needs very low lighting to obtain a clear color image.

## PACKAGE

Dimensions (L x W x H): 0x0x0 mm	Gross Weight: 0 kg
----------------------------------	--------------------