

Code: HCVR4208A-S3

HD-CVI, PAL, TCP/IP DVR **HCVR4208A-S3** 8 CHANNELS DAHUA

Net: **185.34 EUR** Gross: **185.34 EUR**

Tribrid DVR working in standards: HD-CVI - High Definition Composite Video Interface, PAL, TCP/IP.
The HD-CVI interface allows to transmission of analog, composite video signal via coaxial cable. During transmission there are no delays and is maintained the original, high quality image.



SPECIFICATION

Standard:	HD-CVI, PAL, TCP/IP
Video inputs:	8 pcs BNC, HD-CVI / PAL
Video outputs:	1 pcs HDMI 1 pcs VGA
Audio inputs:	4 pcs CINCH
Audio outputs:	1 pcs CINCH
Image records resolutions:	<ul style="list-style-type: none">• AHD / HD-CVI : qHD - 960 x 1080 , 720p - 1280 x 720• CVBS : 960H - 960 x 576• IP : max. 5 Mpx - 2592 x 1944
Recording speed adjustment:	5 Mpx IP @ 1 ... 25 fps qHD @ 1 ... 12 fps 720p @ 1 ... 15 fps 960H @ 1 ... 25 fps for each channel
Image compression method:	H.264
Recording modes:	Manual, Motion Detection, Schedule
Supported hard drives:	2 x 6 TB SATA
External storage devices backup:	Save single frames and whole records from DVR drive to the USB drive
Searching and playback the records:	Records searching: by time + timeline with record type. Playback: forward, fast, slow, step Advanced searching (to the one second accuracy)
Network functions:	Network Client Software and IE browser: live view, playback and backup of the records, partial configuration of the recorder parameters
Mobile phones support:	Port no.: 37777 or access by a cloud (P2P) • Android: Free application DMSS • iOS (iPhone): Free application DMSS
Alarm inputs / outputs:	8 / 3
PTZ control:	IP Speed Dome Cameras, Control compatible with coax PTZ HD-CVI RS-485 - PELCO-D/P
Motion Detection:	Split the screen into zones 22 x 18 motion zones Very good sensitivity after motion detection records detected channels only

DELTA-OPTI Monika Matysiak; <https://www.delta.poznan.pl>
POL; 60-713 Poznań; Graniczna 10
e-mail: delta-opti@delta.poznan.pl; tel: +(48) 61 864 69 60

USB:	2 x USB 2.0
Mouse support:	✓
IR remote controller in the set:	—
Power supply:	12 V DC / 4 A (power adapter included)
Weight:	1.65 kg
Dimensions:	375 x 287 x 53 mm
Supported languages:	Polish, English
Country of origin:	China
Manufacturer / Brand:	DAHUA
Guarantee:	3 years

PRESENTATION

Front panel:



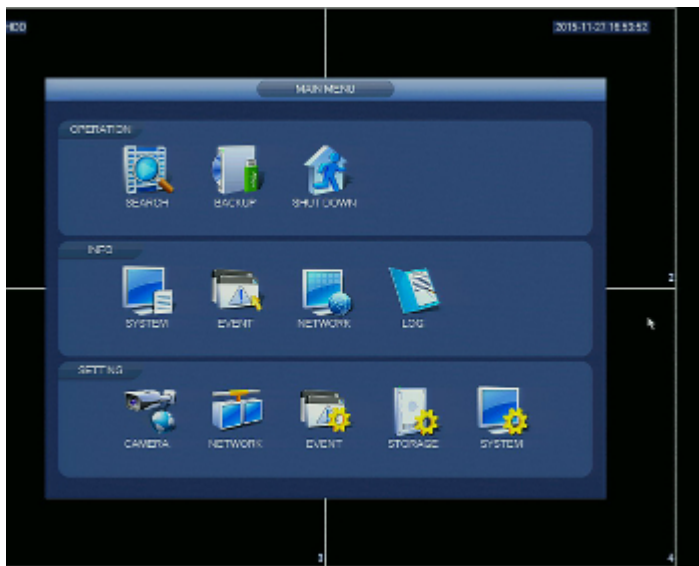
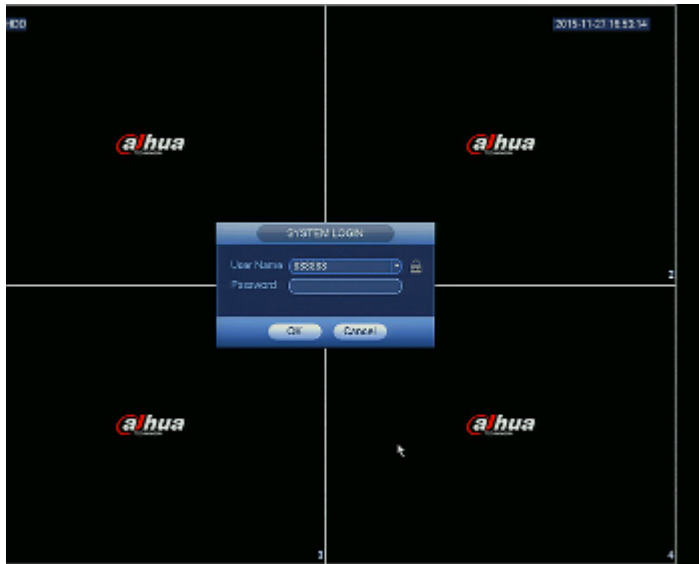
Rear view:



In the kit:



Example captures of device interface:



PACKAGE

Dimensions (L x W x H): 0x0x0 mm	Gross Weight: 0 kg
----------------------------------	--------------------



DELTA-OPTI Monika Matysiak; <https://www.delta.poznan.pl>
POL; 60-713 Poznań; Graniczna 10
e-mail: delta-opti@delta.poznan.pl; tel: +(48) 61 864 69 60